

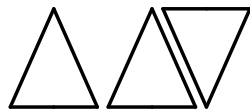
# **COGNIZER™ TRANSLATE GUIDE**



**MANDRAKE TECHNOLOGY LIMITED**

July 2013

**Copyright © Mandrake Technology Limited 2013**



**MANDRAKE TECHNOLOGY LIMITED**

[www.mandrake-technology.com](http://www.mandrake-technology.com)

## Introduction

Cognizer Translate is a free software utility that you can use to extract, translate and save your Cognizer maps into a variety of graph data formats so you can load them into other graph visualisation and processing applications.

It supports translation to:

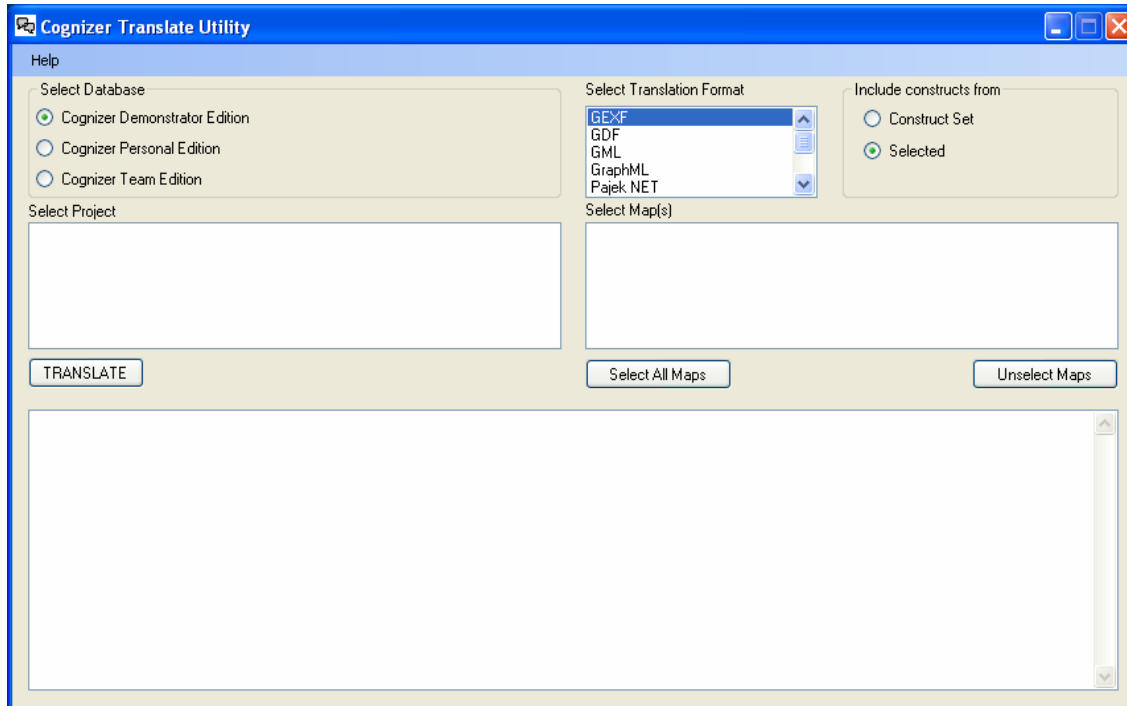
- GEXF (Graph Exchange XML) format
- GDF (GUESS data file) format
- GML (Graph Modeling Language) format
- GraphML format
- Pajek NET format
- GraphViz DOT format
- UCINET DL format
- Tulip TLP format
- Netdraw VNA format

## To download and install Cognizer Translate

1. Download the install zip file from <http://www.mandrake.myzen.co.uk/CognizerTranslate.zip> and save to a temporary folder on your computer.
2. Unzip the install zip file.
3. Run setup.exe
4. Cognizer Translate will be installed and started.

## Using Cognizer Translate

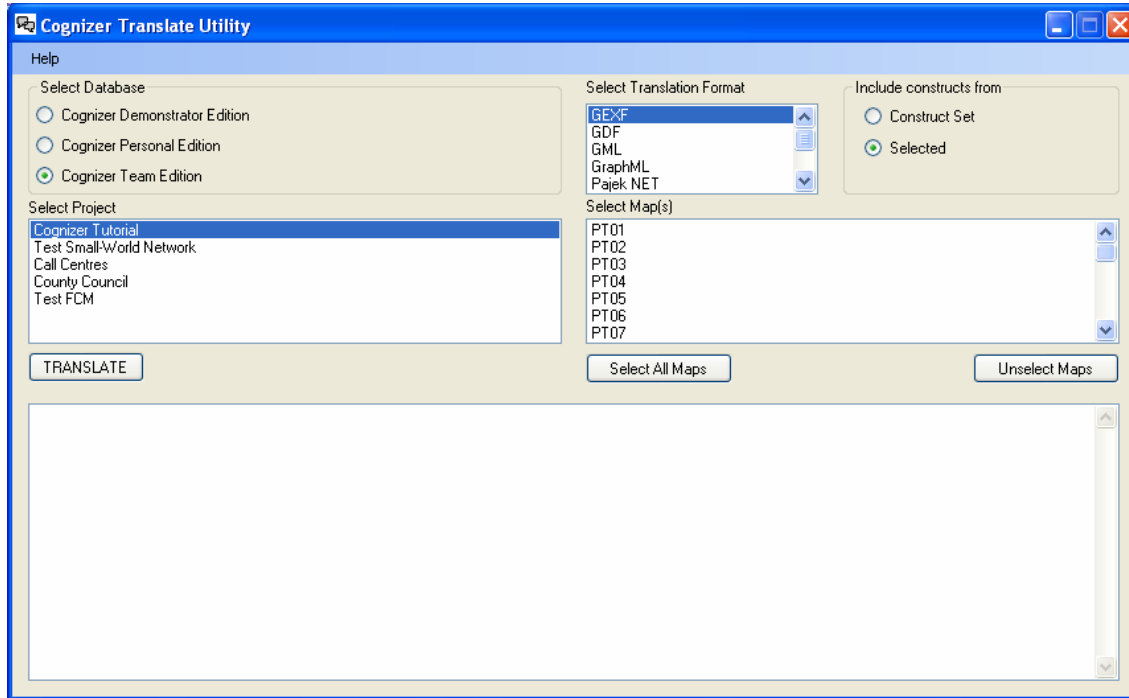
To start Cognizer Translate, select it from Start > All Programs > Mandrake > Cognizer Translate



Cognizer Translate will check which editions of Cognizer you have installed on your computer when it starts.

## Cognizer Translate Guide

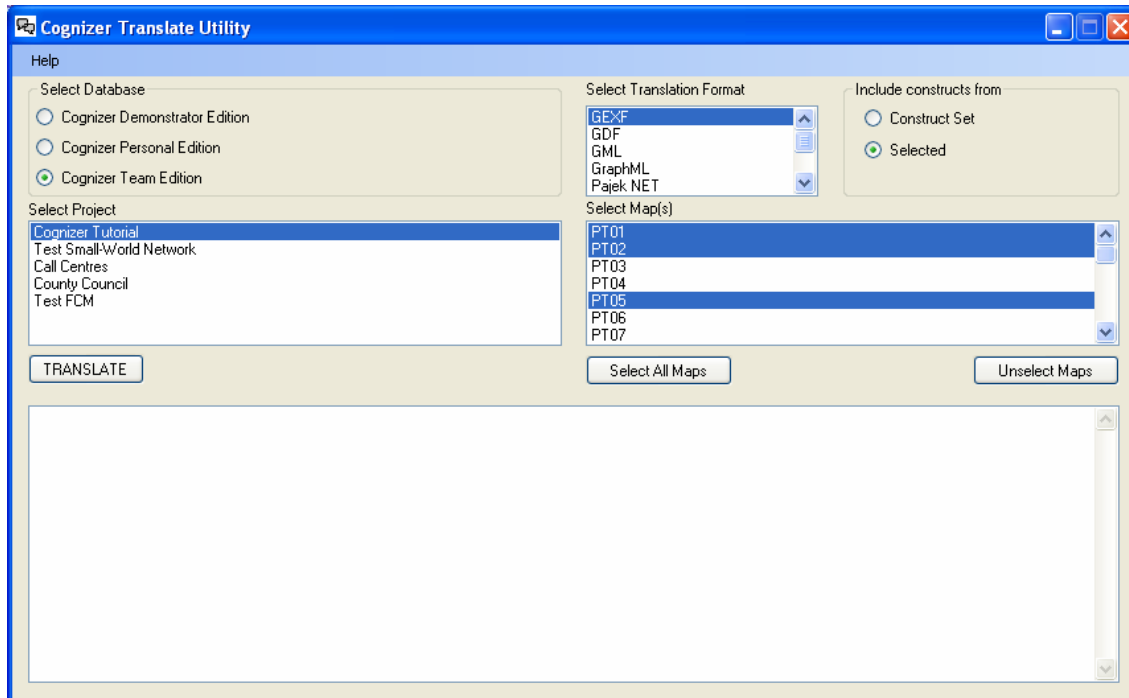
Select the Cognizer database you want to use. The projects within the database will be listed. Select the project you want to use.



The maps within the project will be listed.

## Cognizer Translate Guide

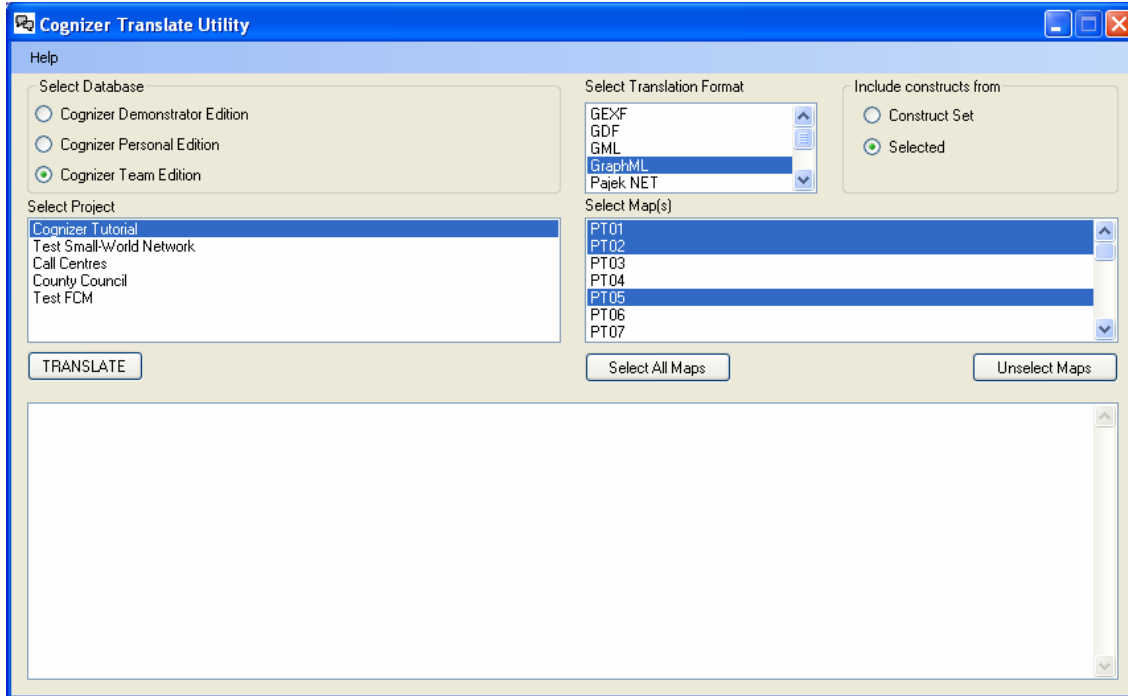
Select the maps you want to translate. You can select multiple maps. To select all the maps listed click the **Select All Maps** button. To unselect selected maps click the **Unselect Maps** button.



# Cognizer Translate Guide

Select the translation format to use.

Choose which constructs to include in the translation. You can either include all constructs in the **Construct Set** associated with the map or just the constructs **Selected** for the map.

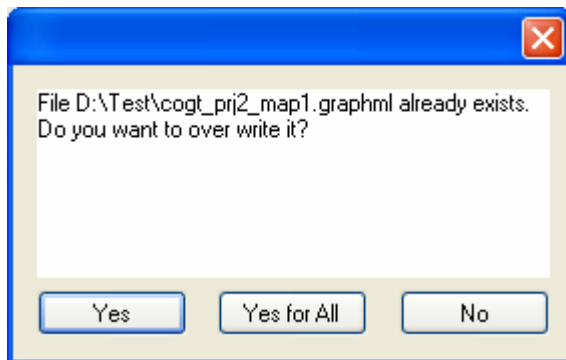


## Cognizer Translate Guide

Click the **TRANSLATE** button to start the translation. You will be prompted to select the folder in which to save the translated map files.



If a translated map file already exists, you will be asked if you want to overwrite it.

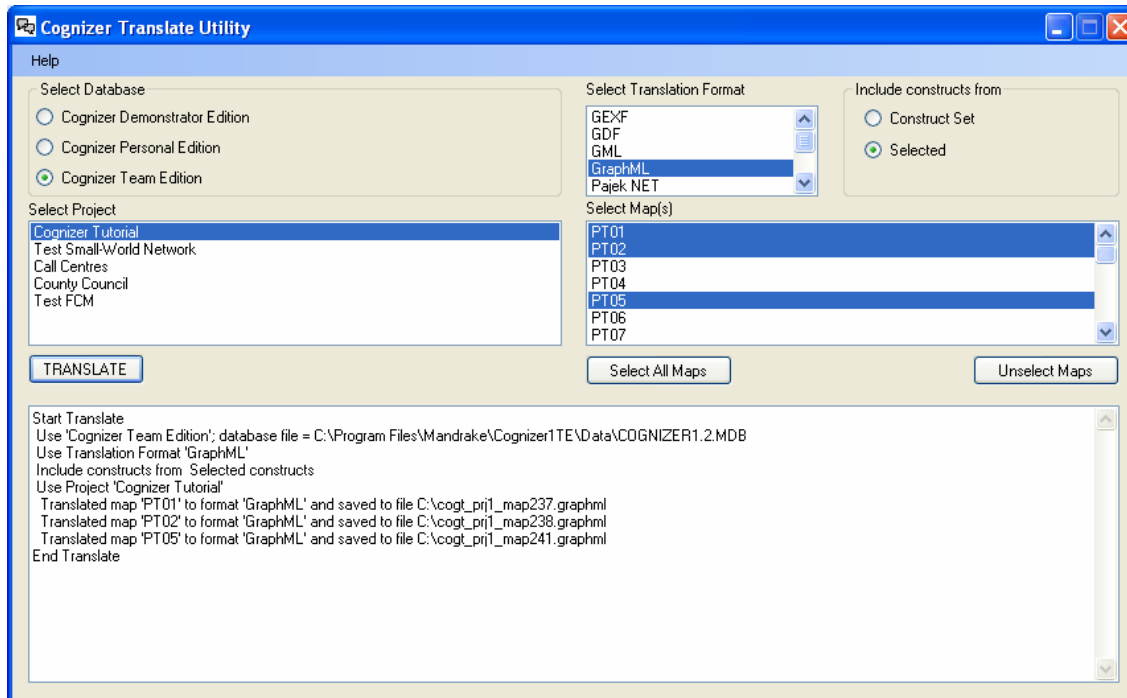


Click the **Yes** button to over write this file only. Click the **No** button to not over write this file. Click the **Yes for All** button to over write this file and any others that have been selected.



# Cognizer Translate Guide

A log of the translate process will be shown.

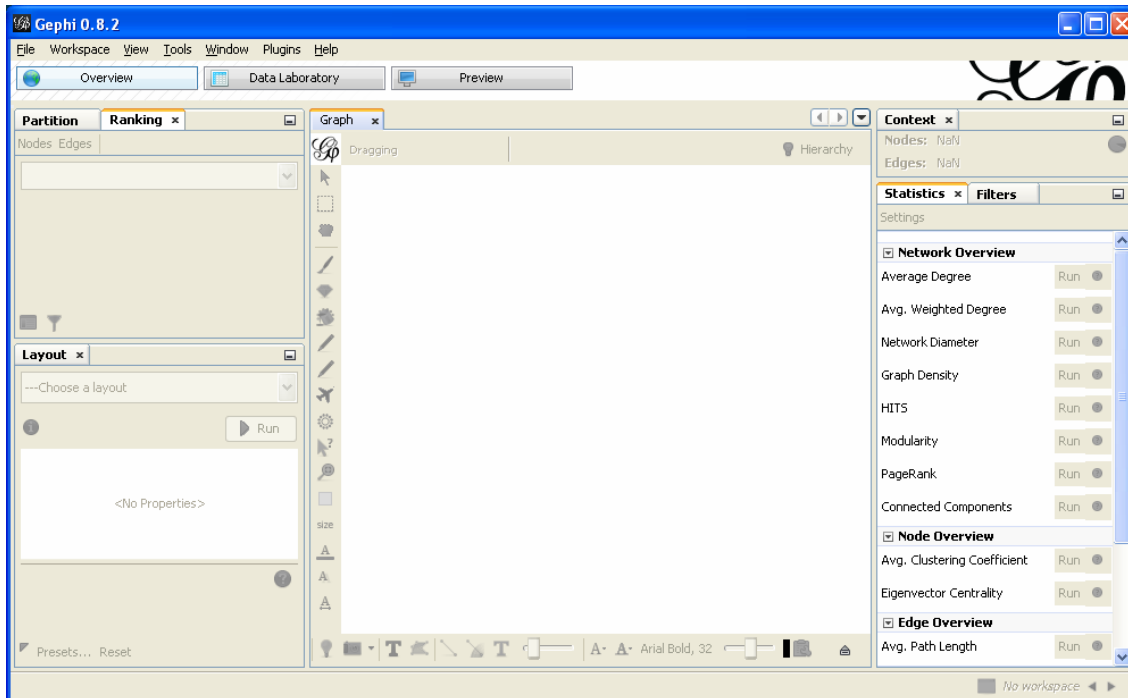


If required you can select and copy (right click) the contents of the log so you can paste it into a document.

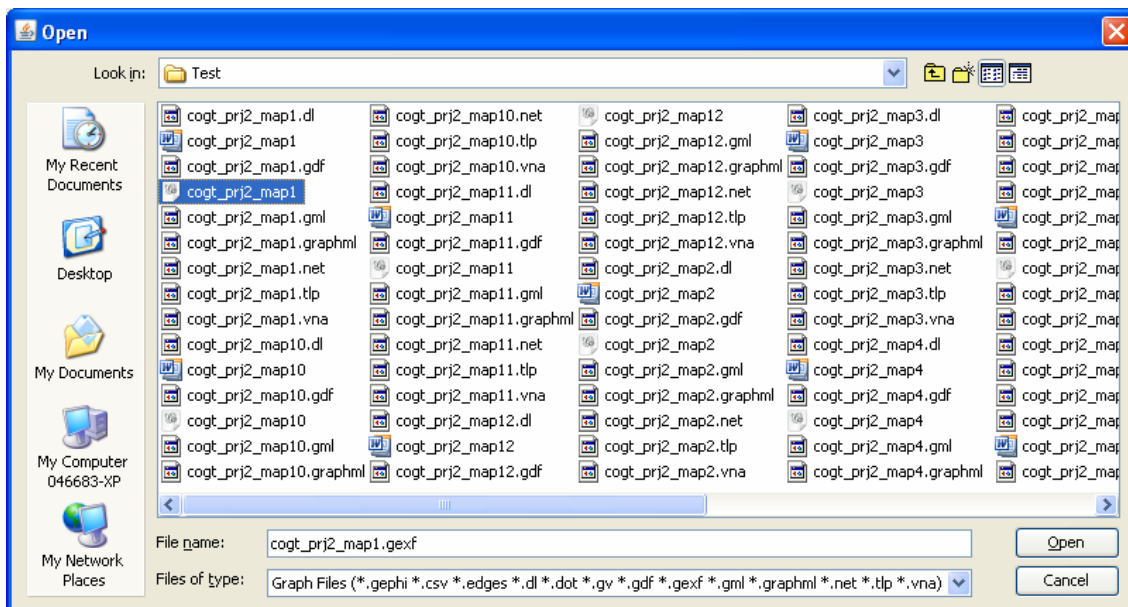
## Example of using a translated map file

Gephi (<https://gephi.org/>) is an open source interactive visualization and exploration platform for all kinds of networks and complex systems, dynamic and hierarchical graphs.

Start Gephi.

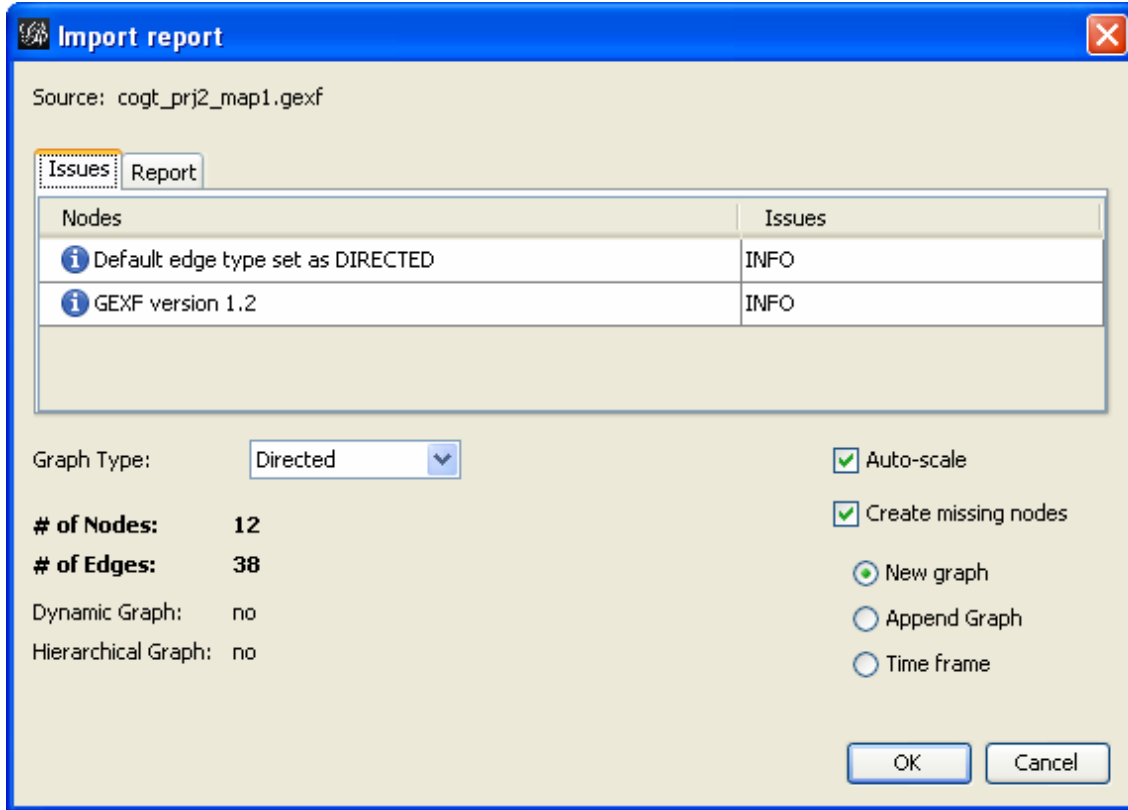


Open a GEXF file created by Cognizer Translate.

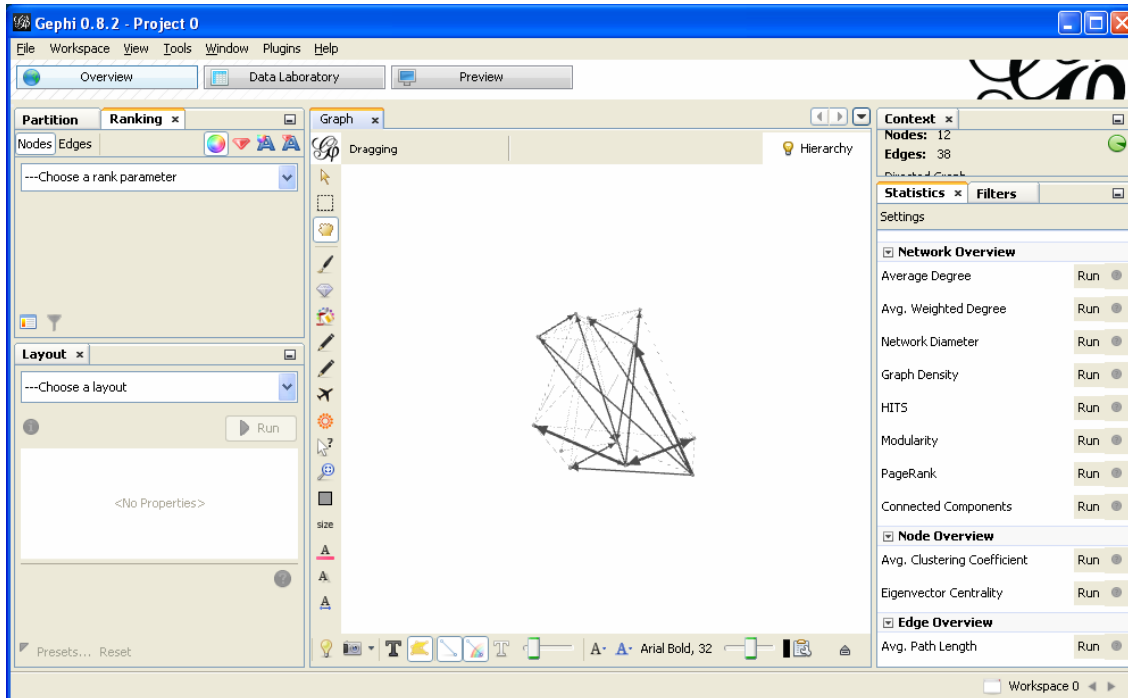


# Cognizer Translate Guide

OK import report.



View graph.



## Feedback

Cognizer Translate is provided as a free 'as is' software utility. If you experience any problems in using it or importing the translated map files into other software then please contact [support@mandrake-technology.com](mailto:support@mandrake-technology.com) with a subject line of Cognizer Translate.